

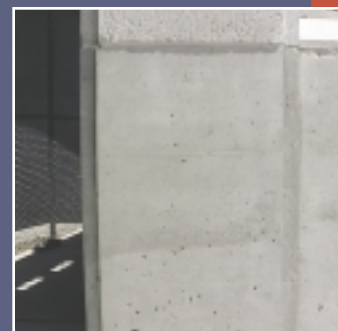
The SEI Graffiti Proofer, is a penetrating, non-sacrificial, non-yellowing and non-glossy Graffiti Proofing treatment. The SEI Graffiti Proofer shows no deterioration from ultraviolet rays, ozone, salt spray or acid rain. SEI Graffiti Proofer allows for expansion, contraction, building movement and temperature extremes. The SEI Graffiti Proofer will allow moisture vapor to escape while not allowing moisture to enter the structure. This product is VOC & Southern California Air Quality Management District

(AQMD) compliant, non-toxic, non-flammable and environmentally friendly.

The SEI Graffiti Proofer is the best defense against graffiti. Remove Graffiti faster than it can be applied!

SEI Graffiti Proofer was selected to be used on the largest Anti-graffiti coated structure in North America.

Find out today what North America's largest contractors already know



How it Works:

The SEI Graffiti Proofer can be applied to any porous substrate that is susceptible to graffiti. Once applied our proprietary SEI Technology™ forms a complex molecular barrier in the pores of the substrate's surface, creating extensive Graffiti protection.

When graffiti is applied to a surface that is protected with the SEI Graffiti Proofer, the graffiti is not actually on the substrate, it is on our Proofer. The SEI Graffiti Remover SYS is sprayed onto the graffitied area and left to penetrate for 30 to 90 seconds. The SEI Graffiti Remover SYS active ingredients migrate and penetrate the graffiti creating molecular space between the vandalism and the substrate, making the removal very easy. The SEI Graffiti Remover SYS was chemically engineered not to have any chemical, physical, mechanical or esthetic affect on the SEI Graffiti Proofer.

Advantages:

- Non-sacrificial,
- Non-glossy, Non-yellowing
- VOC compliant
- AQMD compliant
- Allows for expansion and contraction
- Can be applied to horizontal and vertical surfaces
- ASTM certified

Recommendations:

- SEI Graffiti Proofer should be accepted as an anti-graffiti coating.
- SEI Graffiti Proofer should be used as a graffiti proofer on existing structures subjected to or considered to be susceptible to graffiti.
- The SEI Graffiti Proofer is a two coat system
- Graffiti must be removed with the SEI Graffiti Remover SYS followed by water.

See SEI Graffiti Proofer Product Data Sheet for further information

SEI™

ADVANCED CHEMICAL
TECHNOLOGY™