

## GRAFFITI MEETS FLUORO-TECHNOLOGY



The Graffiti Proofer Anti-Stick utilizes SEI's unique fluoropolyol that exhibits a tremendous slip coefficient with chemical and abrasion resistance. This single component and low VOC clear coating has outstanding anti-stick, UV and long-term performance properties. Many spray paints will run off the surface, thus deterring further vandalism. The GPA-200 is non-yellowing, non-whitening and globally compliant. This coating exhibits outstanding weathering characteristics and comes with 10-year performance and manufacturer defect warranty.

**Low Surface Energy**  
**Dry Time 4-6 hours - Full Cure 24 hours**  
**Approximate Coverage 300-400 sq/ft per gallon**  
**Highly Flexible & Outstanding Abrasion Resistance**

See Product Data Sheet and Material Safety Data Sheet for further information

**SEI™ SEI CHEMICAL**

800 804 3978 [www.seichemical.com](http://www.seichemical.com)

## GRAFFITI MEETS NANOTECHNOLOGY



The Graffiti Proofer is a patented, nanotechnological non-stick coating. It is water-clear, UV stable, heat stable and has extreme chemical resistance. The Graffiti Proofer does not allow paint, graffiti, permanent marker or stickers to adhere. Graffiti can be removed with a dry paper towel, pressure washer or safe cleaner. The Graffiti Proofer exceeded the performance requirements for ASTM D6578 Graffiti Resistance Test. This product is environmentally friendly, user safe, VOC, AQMD and CARB compliant. If the coating has been damaged simply reapply with minimal surface preparation.

### ***ASTM D6578 Graffiti Resistance Test***

Clear, UV and heat stable  
 Non-stick film  
 Coverage: 150-200 sq.ft./gal

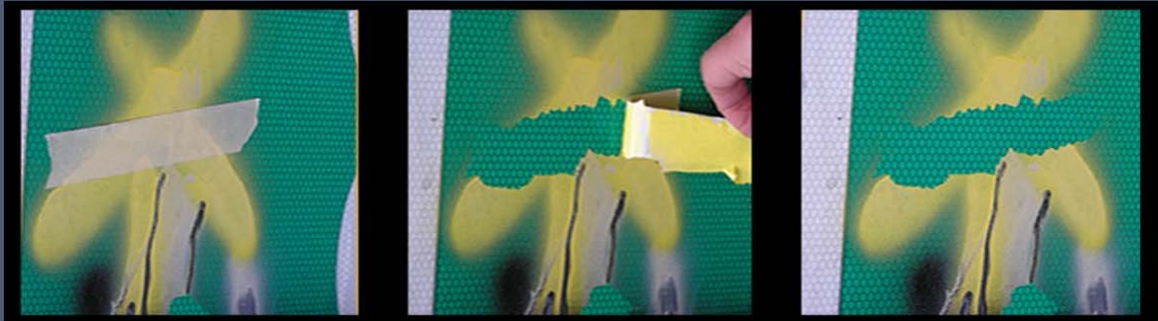
Quick dry & non-sacrificial  
 Apply to any surface  
 Excellent longevity

See Product Data Sheet and Material Safety Data Sheet for further information

**SEI™ SEI CHEMICAL**

800 804 3978 [www.seichemical.com](http://www.seichemical.com)

GRAFFITI MEETS NANOTECHNOLOGY



The Graffiti Proofer Nano-Base is an ultra thin film clear coat that is permanent, durable and completely non-stick. This single component, chemically resistance and UV stable product dries to the touch in one hour. The GPA-400 is a true breakthrough in coating technology, as graffiti, stickers and other markings cannot adhere. As well, this coating can be applied to road signage, as it does not alter the reflective properties. Graffiti can be removed with a pressure washer or safe cleaner. The GPA-400 exceeded the performance requirements of ASTM D6578 Graffiti Resistance Test. This product is user safe and VOC compliant. If the coating has been damaged simply reapply with minimal surface preparation.

Clear, UV and heat stable

Non-stick film

~Coverage: 800-1200 sq.ft./gal

Quick dry & non-sacrificial

Apply to any surface

Excellent longevity

See Product Data Sheet and Material Safety Data Sheet for further information

SEI™ SEI CHEMICAL

800 804 3978 [www.seichemical.com](http://www.seichemical.com)

# SEI GRAFFITI PROOFER® & CURING AGENT™



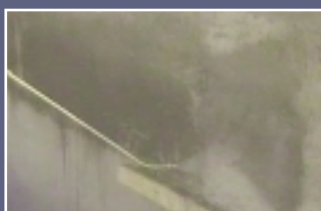
The SEI Graffiti Proofer & Curing Agent is a penetrating, non-sacrificial, non-yellowing and non-glossy Graffiti Proofing treatment. This product is a certified and accredited concrete curing agent as specified by ASTM. This unique product will cure new concrete structures and will provide 100% graffiti protection all in one easy step. The SEI Graffiti Proofer & Curing Agent shows no deterioration from ultraviolet rays, ozone, salt spray or acid rain. SEI Graffiti Proofer & Curing Agent allows for expansion, contraction, building movement and temperature extremes. The SEI Graffiti Proofer & Curing Agent will allow moisture vapor to escape while not allowing moisture to

enter the structure. This product is VOC & Southern California Air Quality Management District (AQMD) compliant, non-toxic, non-flammable and environmentally friendly.

The SEI Graffiti Proofer & Curing Agent is the best defense against graffiti when constructing a new structure. Solve the problem of graffiti and cure your structure in one step!

SEI Graffiti Proofer & Curing Agent was selected to be used on the largest Anti-graffiti coated structure in North America.

Find out today what North America's largest contractors already know.



## How it Works:

The SEI Graffiti Proofer & Curing Agent should be applied to green concrete only. Once applied the product will both cure the concrete and provide unmatched 100% graffiti protection. Our proprietary SEI Technology™ cures the new structure and forms a complex molecular barrier in the pours of the substrate's surface, creating extensive graffiti protection. When graffiti is applied it is not physically on the substrate, it is on our proofer.

The SEI Graffiti Remover SYS. is sprayed onto the graffitied area and left to penetrate for 30 to 90 seconds. The SEI Graffiti Remover SYS active ingredients migrate and penetrate the graffiti creating molecular space between the vandalism and the substrate, making the removal very easy. The SEI Graffiti Remover SYS was chemically engineered not to have any chemical, physical, mechanical or esthetic affect on the SEI Graffiti Proofer & Curing Agent .

## Advantages:

- May be used on green concrete
- VOC compliant
- AQMD compliant
- Certified and accredited as a concrete curing agent as specified by ASTM
- Allows expansion and contraction
- Can be applied to horizontal and vertical surfaces

## Recommendations:

- SEI Graffiti Proofer should be accepted as an anti-graffiti coating.
- SEI Graffiti Proofer should be used as a graffiti proofer on new structures subjected to or considered to be susceptible to graffiti.
- The SEI Graffiti Proofer is a two coat system
- Graffiti must be removed with the SEI Graffiti Remover SYS followed by water.

See SEI Graffiti Proofer & Curing Agent Product Data Sheet for further information

**SEI**™

ADVANCED CHEMICAL  
TECHNOLOGY™

# SEI GRAFFITI REMOVER TOWELS™

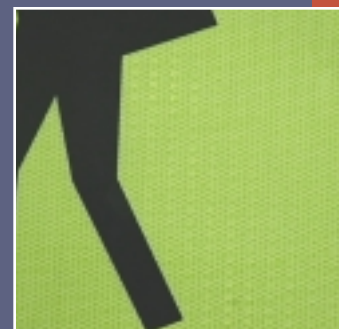
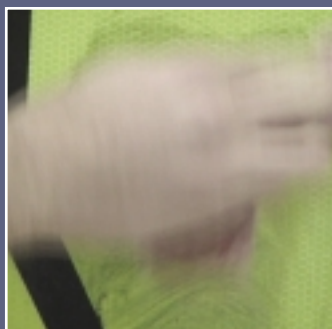
The SEI Graffiti Remover Towels utilize SEI Technology™. This migratory chemistry fractures the molecular bonds in paints, lacquers, enamels, waxes and stains.

The SEI Graffiti Remover Towels migratory chemistry penetrates the graffiti and creates molecular space between the vandalism and the substrate, making the removal very easy.

This formula was designed for maximum consumer safety and therefore does not contain methylene chloride, chlorinated solvents, methanol, toluene or acetone.

One does not have to wear gloves when handling this product. The SEI Graffiti Remover Towels chemistry is completely non-toxic and the towel itself is biodegradable. The SEI Graffiti Removers are VOC and Southern California Air Quality Management District (AQMD) compliant.

The SEI Graffiti Remover Towels are also used for multi-purpose cleaning. They are effective on different types of paints, lacquers, enamels, markers, waxes, dirt, grit and grease.



## Use Towels on:

- Road Signs
- Phone Booths
- Buses & Bus Stops
- Lamp Posts
- Garbage Bins
- Wall Tile
- Desks
- Trains
- Billboards
- Auto Finish
- Lockers
- Bathroom Partitions
- Aluminum Fences
- Siding
- Painted Steel, Brick, or Concrete

## Advantages:

- VOC compliant
- AQMD compliant
- Non-toxic & Biodegradable
- Safe to handle
- Low odor
- Non-flammable formula
- Safe on reflective coatings and road signs
- Not regulated by the Department of Transportation

## Packaging:

12 or 40 Towel canisters are available as well as custom packaging.

## Method of Application:

The SEI Graffiti Remover Towels can be used directly from the canister on any unwanted vandalism or any area that needs to be cleaned.

Unfold a towel and blot graffitied area, let stand 10 to 40 seconds.

Lightly scrub in a circular motion to remove graffiti.

See SEI Graffiti Remover Towels Product Data Sheet for further information

**SEI™**

ADVANCED CHEMICAL  
TECHNOLOGY™

# SEI GRAFFITI REMOVER SPRAY™

The SEI Graffiti Remover Spray utilizes SEI Technology™. This migratory chemistry fractures the molecular bonds in paints, lacquers, enamels, waxes and stains.

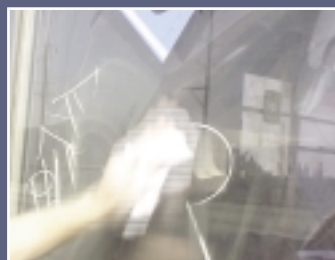
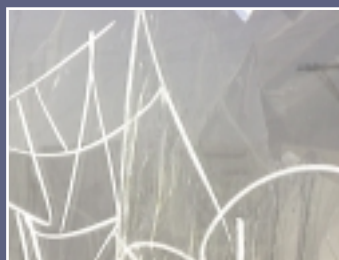
The SEI Graffiti Remover Spray migratory chemistry penetrates the graffiti and creates molecular space between the vandalism and the substrate, making the removal very easy.

The SEI Graffiti Remover Spray is VOC and Southern California Air Quality Management District (AQMD) compliant and was designed for maximum consumer safety. This product does not

contain any chlorinated solvents, methanol or acetone.

Once the SEI Graffiti Remover Spray has penetrated the graffiti it can easily be removed by a flushing of water. The removal time varies from 45 seconds to 5 minutes, depending on the type of paint and amount of graffiti to be removed.

The SEI Graffiti Remover Spray is a multi-purpose environmental formulation and is effective on different types of paints, lacquers, enamels, waxes and marker.



## Applications:

Can be used on: Concrete, wood, stucco, brick, stone, masonry, vinyl, lexan, plastic, glass, metal, and fiberglass.

## Packaging:

12 oz. & 24 oz.  
Aerosol or Trigger Spray Bottles.

Custom Sizes  
Available.

## Advantages:

VOC compliant

AQMD compliant

Environmentally friendly

Non-toxic

Low odor

Not regulated by the  
Department of Transportation

## Method of Application:

The SEI Graffiti Remover Spray should be applied using an aerosol sprayer, brush or roller. The SEI Graffiti Remover Spray should be applied over any graffiti or unwanted vandalism. Sufficient time, between 30 and 90 seconds, should be allowed for the product to migrate and penetrate the graffiti. After the SEI Graffiti Remover Spray has penetrated the graffiti, simply wash away with water.

See SEI Graffiti Remover Spray Product Data Sheet for further information

**SEI™**

ADVANCED CHEMICAL  
TECHNOLOGY™

# SEI GRAFFITI REMOVER GEL™

The SEI Graffiti Remover Gel utilizes SEI Technology™. This migratory chemistry fractures the molecular bonds in paints, lacquers, enamels, waxes and stains.

The SEI Graffiti Remover Gel migratory chemistry penetrates the graffiti and creates molecular space between the vandalism and the substrate, making the removal very easy.

The SEI Graffiti Remover Gel is VOC and Southern California Air

Quality Management District (AQMD) compliant and was designed for maximum consumer safety. This product does not contain any chlorinated solvents, methanol or acetone.

After the SEI Graffiti Remover Gel has penetrated the graffiti it can be easily removed by flushing with water. The removal time varies from 5 minutes to 1 hour, depending on the type of graffiti and amount to be removed.



## Applications:

Can be used on:  
Concrete, wood, stucco,  
brick, stone, masonry, vinyl,  
lexan, plastic, glass, metal,  
and fiberglass.

## Packaging:

Available in 5 or 55 gallon  
containers.

Custom Packaging  
Available.

## Advantages:

VOC compliant  
AQMD compliant  
Environmentally friendly  
Non-toxic  
Low odor  
Not regulated by the  
Department of Transportation

See SEI Graffiti Remover Gel Product Data Sheet for further information

## Method of Application:

The SEI Graffiti Remover Gel should be applied using a brush or roller. Sufficient time, between 5 minutes and 1 hour, should be allotted for the product to migrate and penetrate the vandalism. The graffiti should be washed away by flushing with water.

**SEI™**

ADVANCED CHEMICAL  
TECHNOLOGY™

# SEI GRAFFITI REMOVER SYS™

The SEI Graffiti Remover SYS utilizes SEI Technology™. This migratory chemistry fractures the molecular bonds in paints, lacquers, enamels, waxes and stains.

The SEI Graffiti Remover SYS migratory chemistry penetrates the graffiti and creates molecular space between the vandalism and the substrate, making the removal very easy.

The SEI Graffiti Remover SYS is a multi-purpose formulation that has no chemical, physical, mechanical or

esthetic affect on the SEI Graffiti Proofer or the SEI Graffiti Proofer & Concrete Curing Agent.

The SEI Graffiti Remover SYS is VOC and Southern California Air Quality Management District (AQMD) compliant and was designed for maximum consumer safety. This product does not contain any chlorinated solvents, methanol or acetone.



## Advantages:

VOC compliant

AQMD compliant

Low odor

Not regulated by the  
Department of Transportation

## Packaging:

12 oz. & 24 oz.

Aerosol

Custom Packaging  
Available

## Method of Application:

The SEI Graffiti Remover SYS should be applied over any graffiti or unwanted vandalism. Sufficient time, between 30 seconds and 90 seconds, should be allowed for the product to migrate and penetrate the graffiti. After the Graffiti Remover SYS has penetrated the graffiti simply wash away with water.

See SEI Graffiti Remover SYS Product Data Sheet for further information

**SEI™**

ADVANCED CHEMICAL  
TECHNOLOGY™